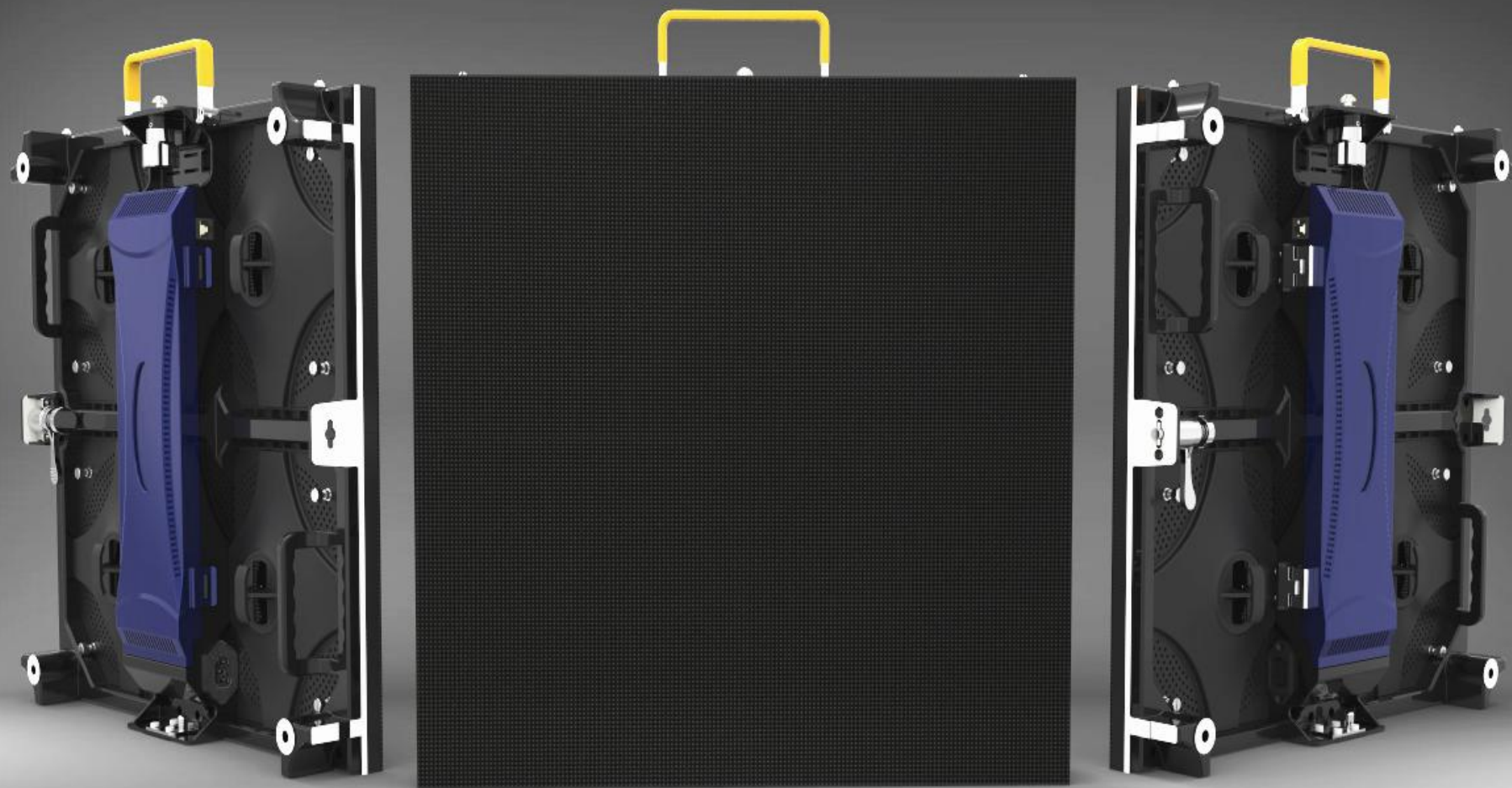
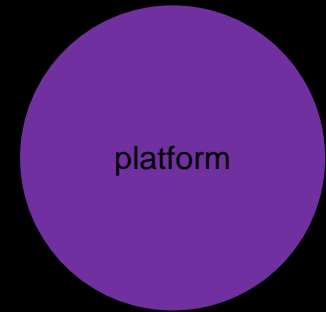
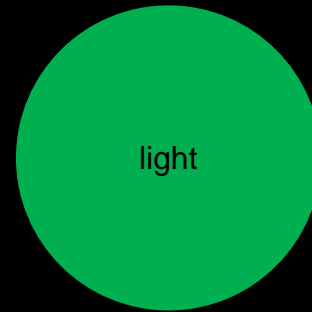
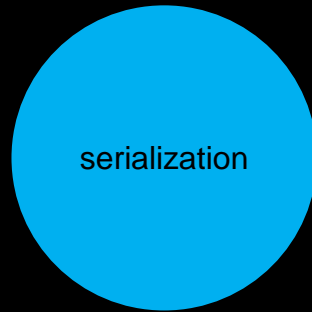


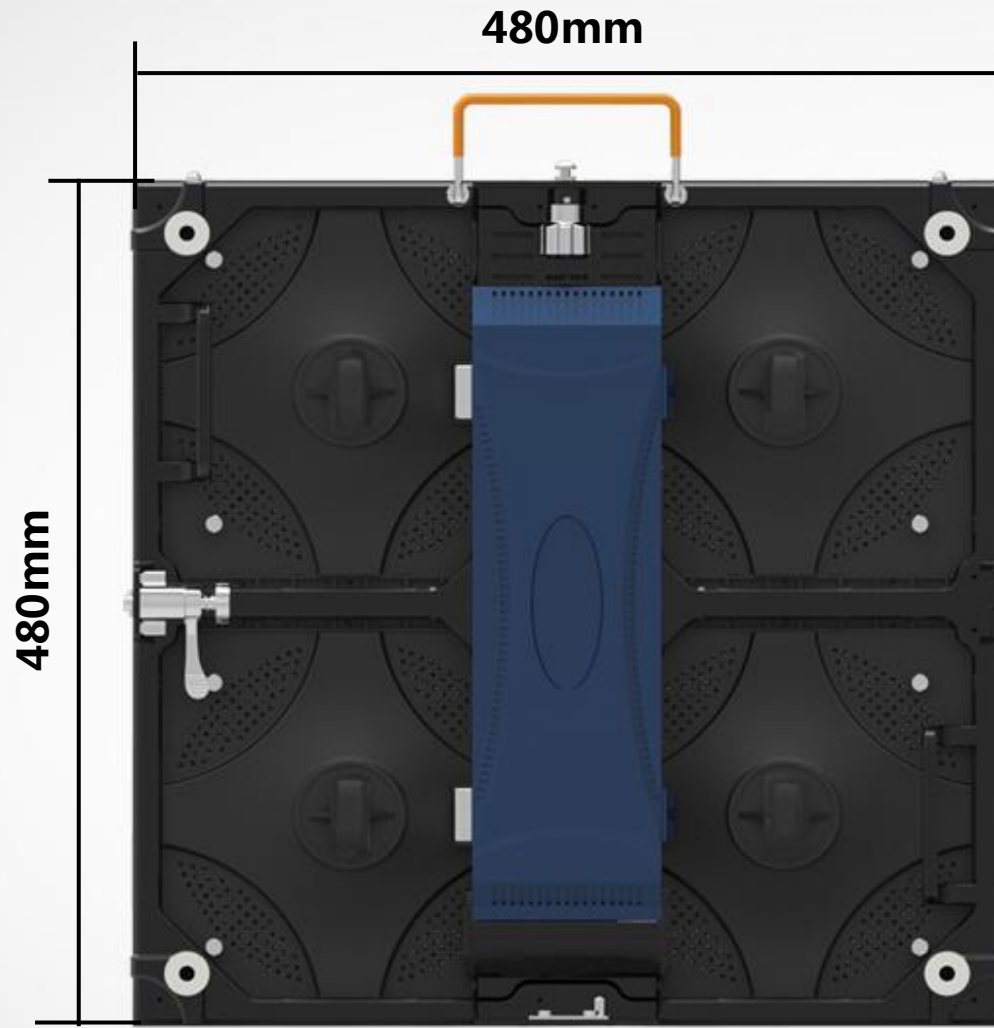
HDI presentation



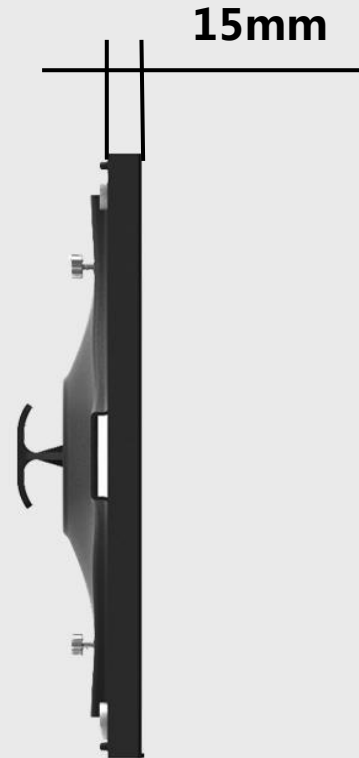
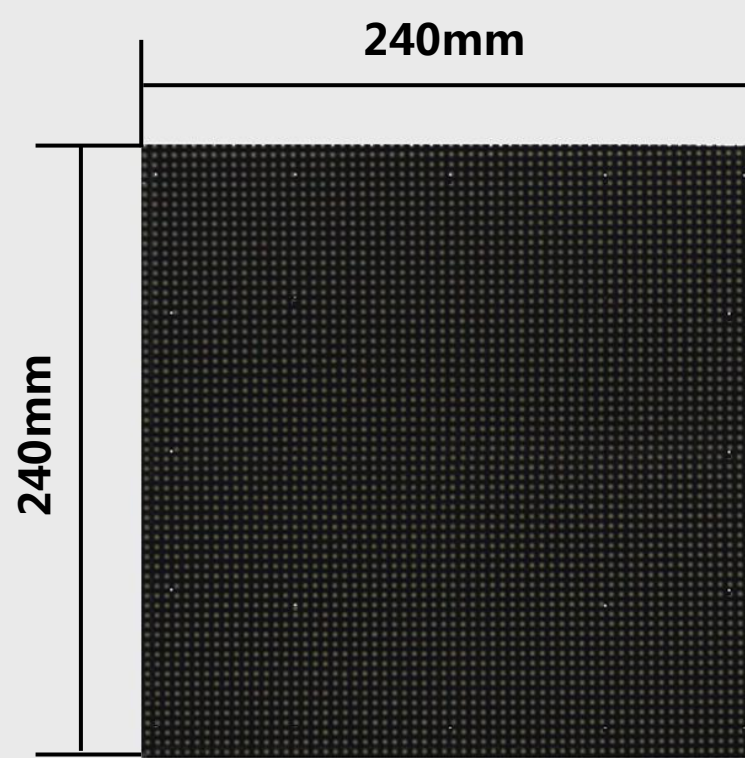
HDI Advantage



standard size



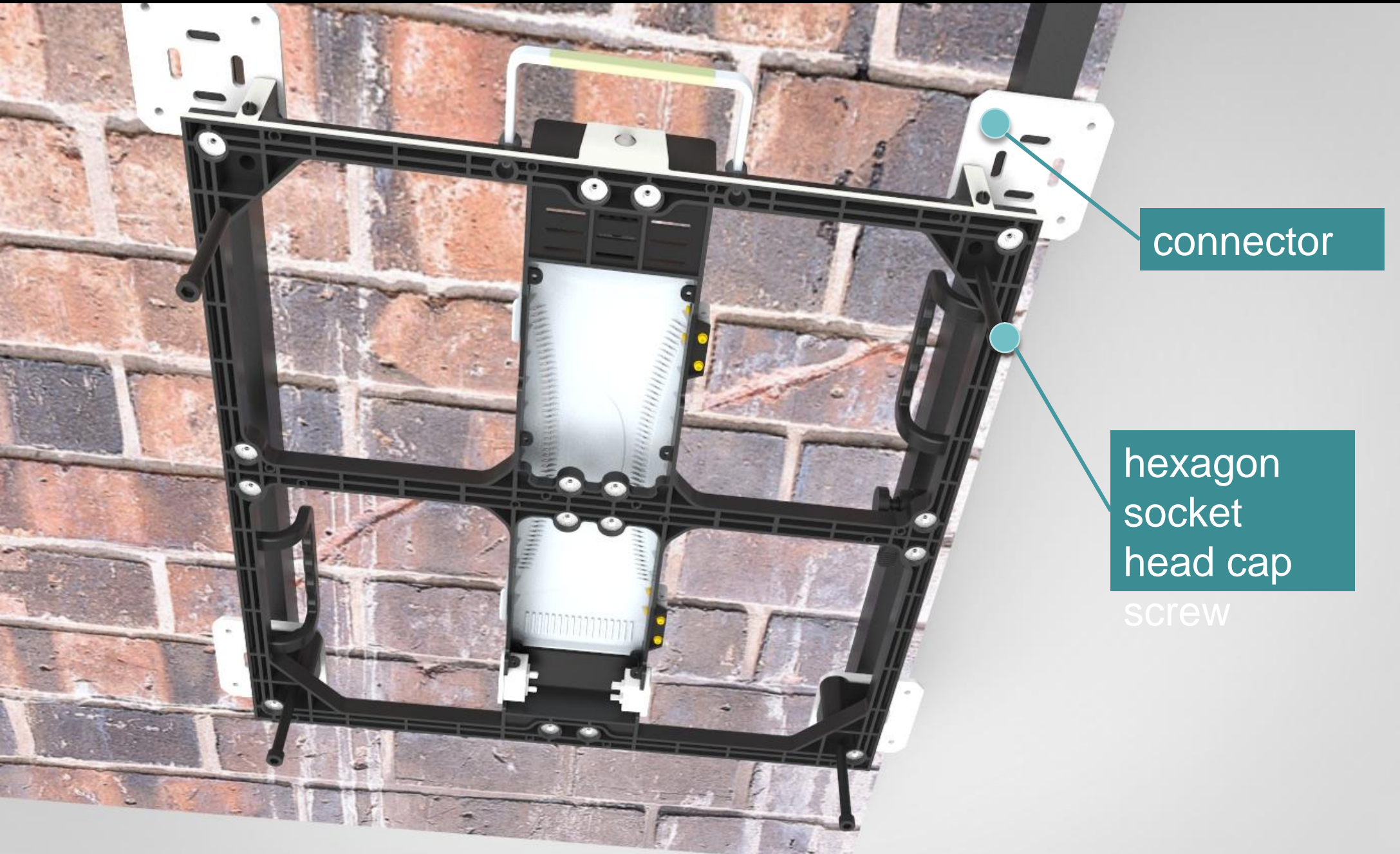
standard module



cabinet, module, power supply and system, all can be front and rear access



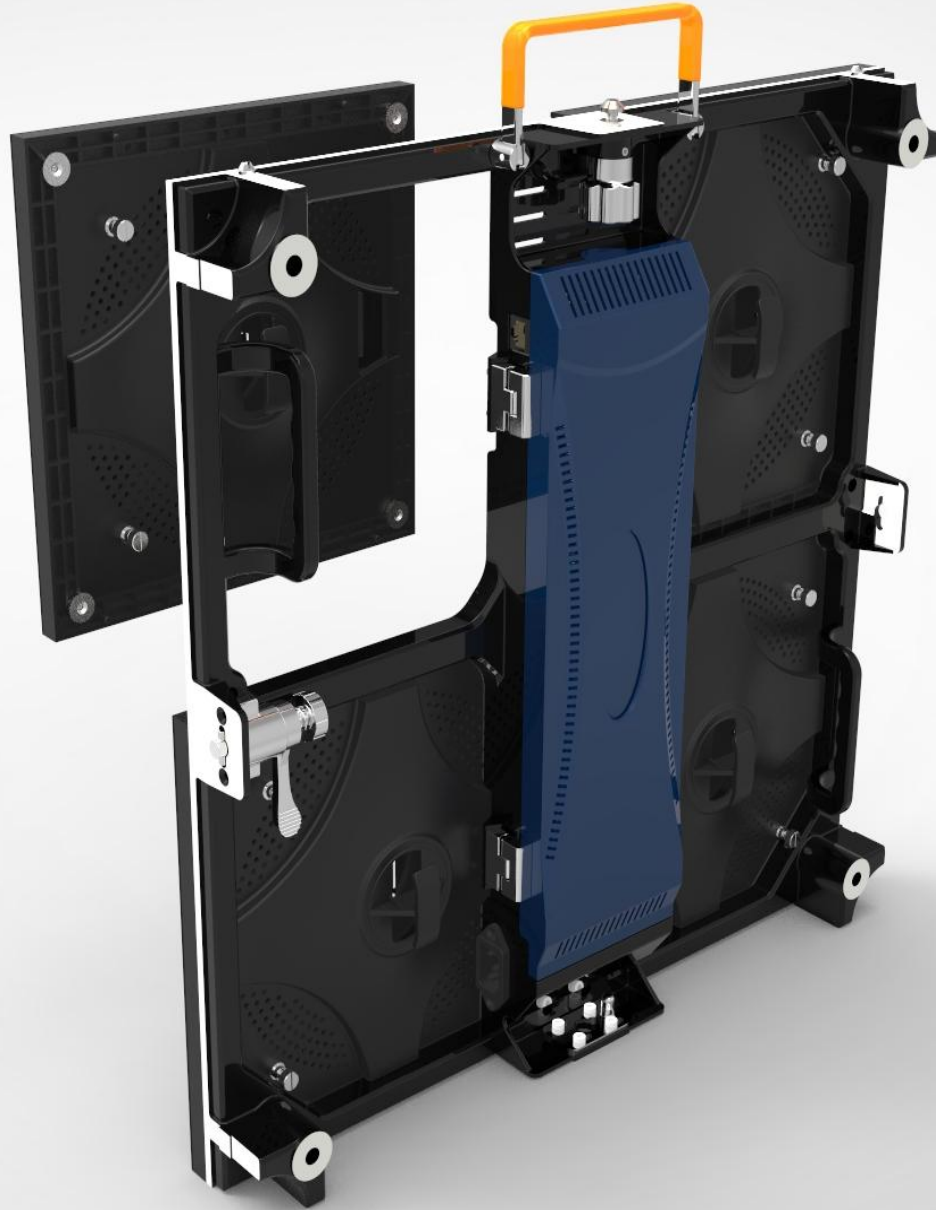
installation diagram on wall



magnet front access



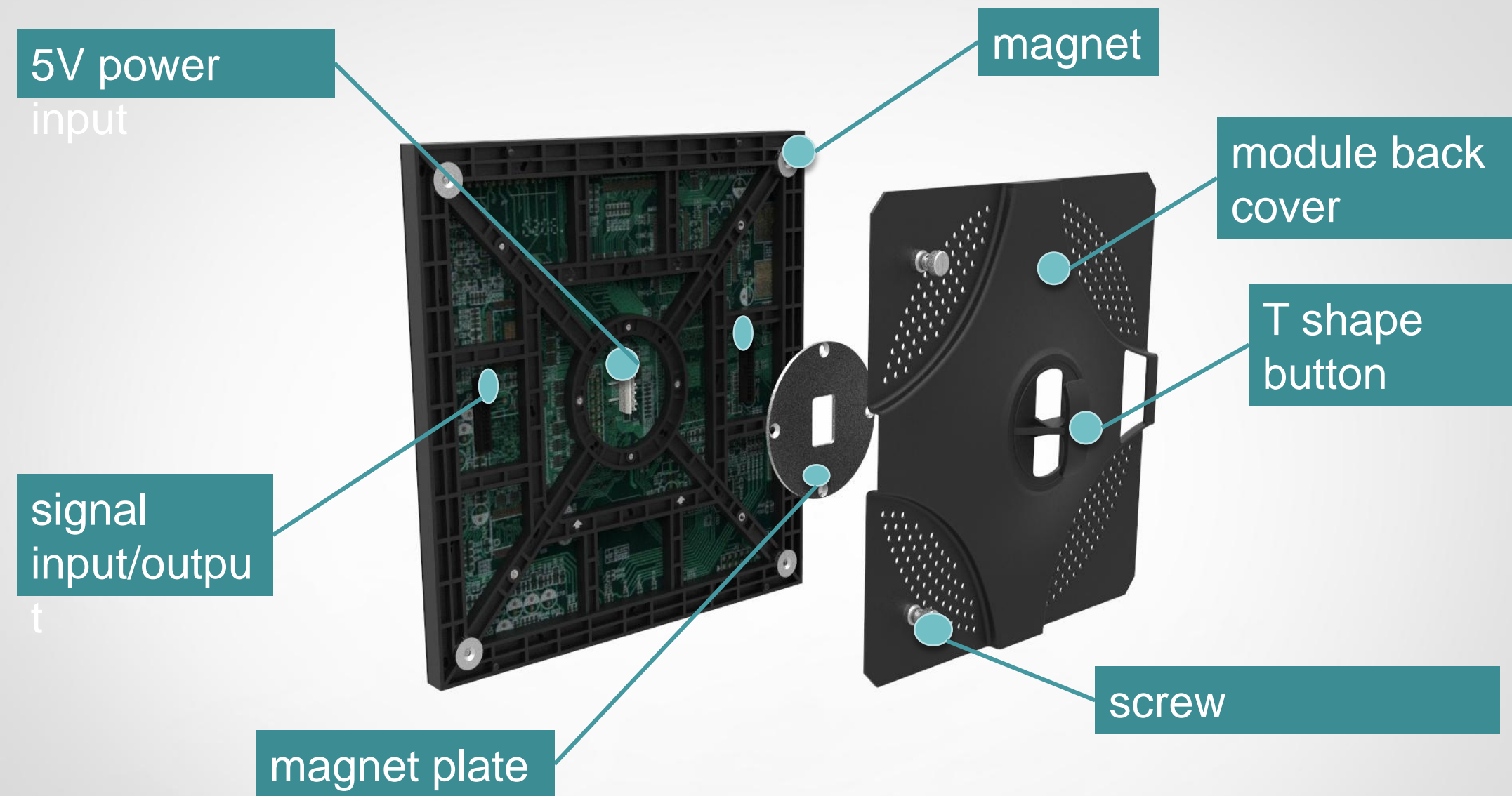
maintenance easily



rear access

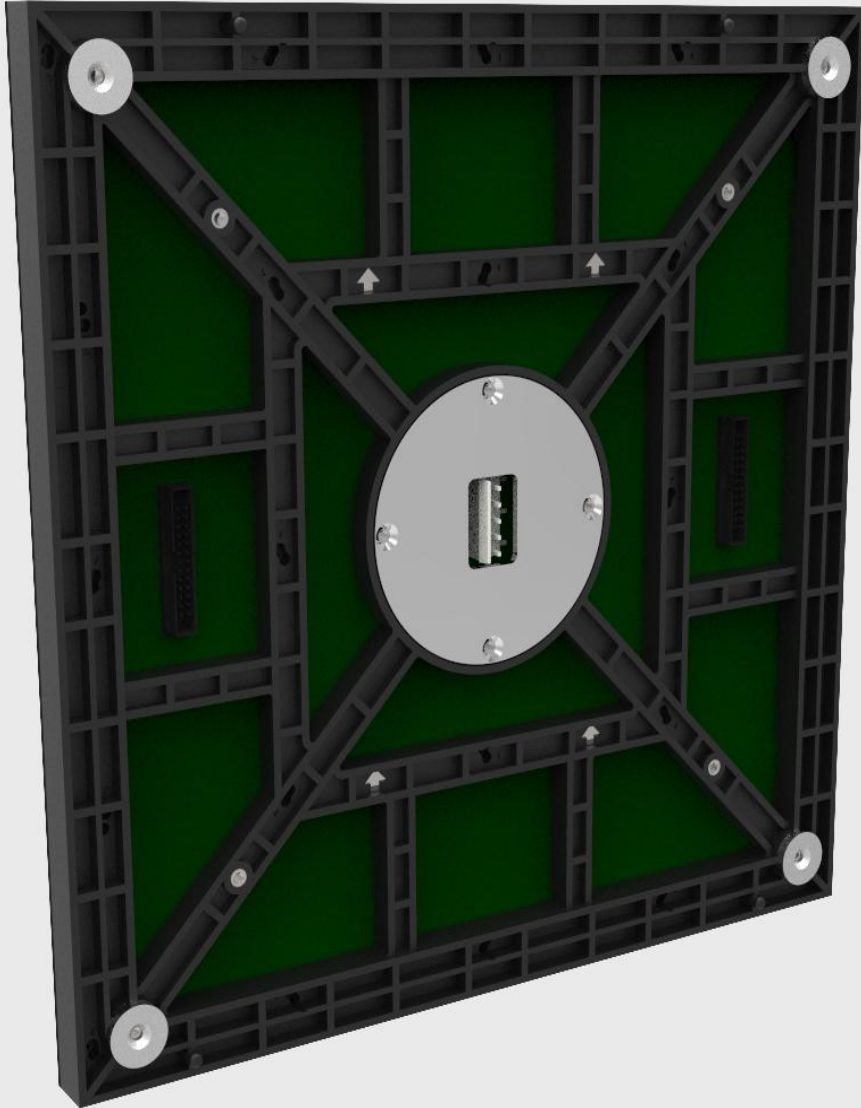


module decompose



★module back cover as option

fixed without copper pillar

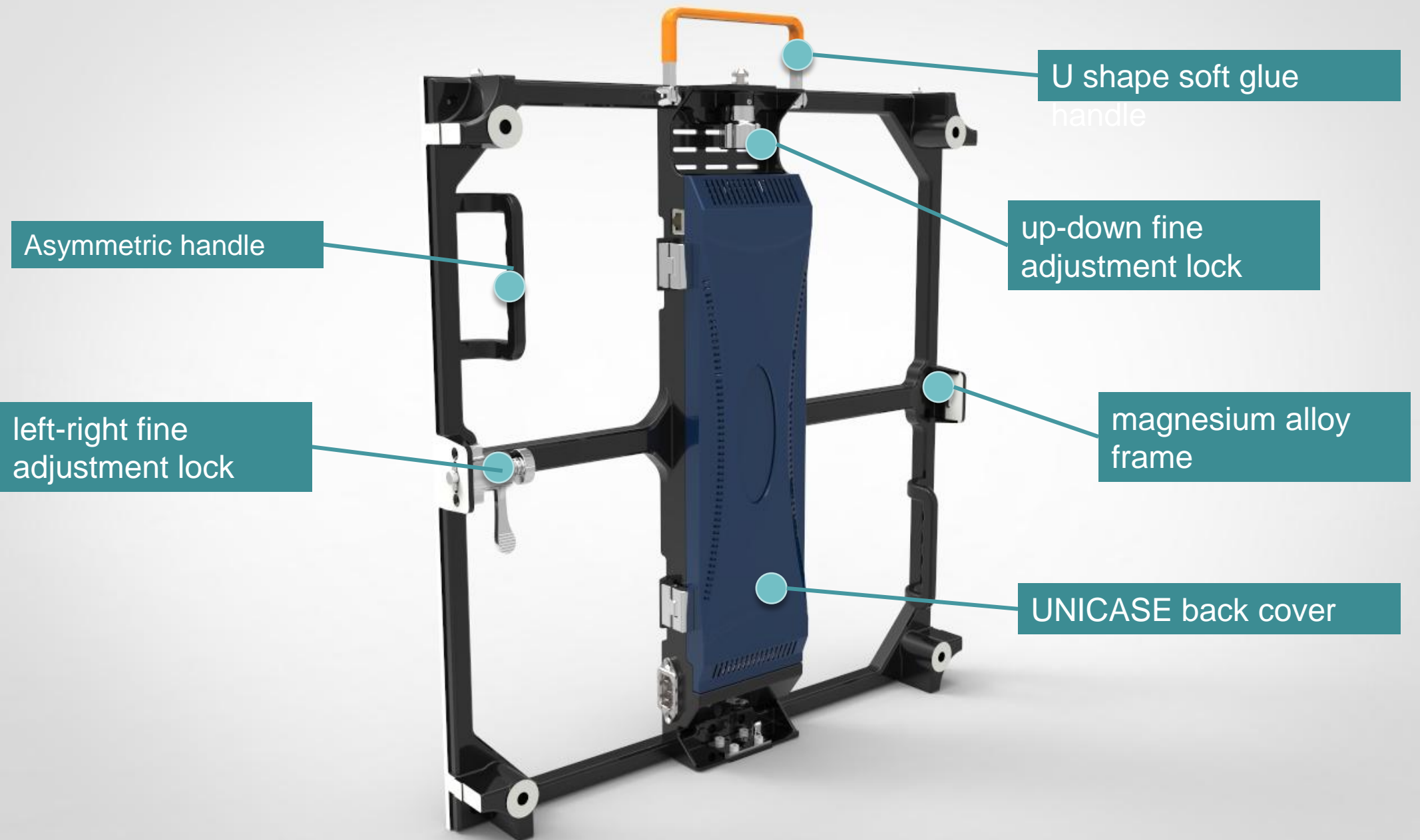


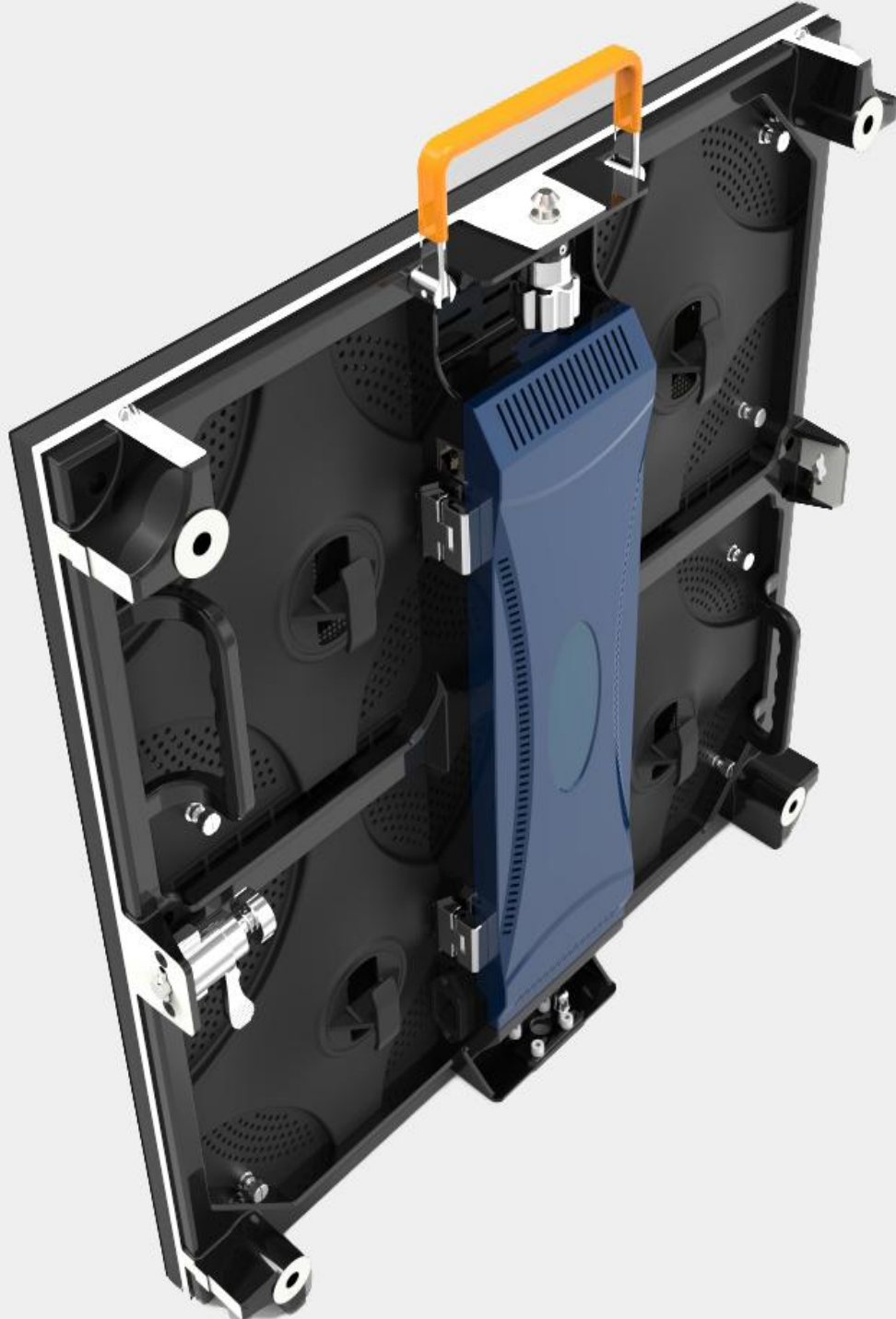
★ save labor

★ save cost

★ improve stability

Magnesium aluminum alloy material, light and firm





auto-lock button



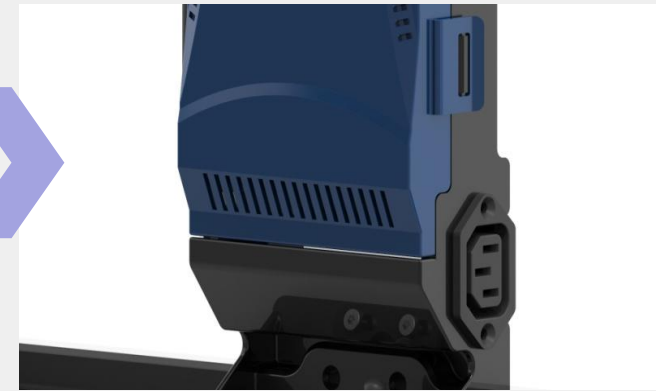
Ethernet port



AC input



AC output



	parameter	IR2.5	IR3.0
physical parameter	pixel pitch	2.5mm	3.0mm
	led	SMD2020(black lamp)	SMD2020 (black lamp)
	cabinet resolution/pixels	192x192	80x80
	pixel density /m ²	160000	111111
	cabinet size (mm)	480x480x67mm	
	cabinet materials	die-casting aluminum	
	cabinet weight/case	5.1Kg/pc	5.1Kg/pc
	electronic parameter	grey scale	14
color (Bit)		16384	
refresh (Hz)		>1920	
drive mode		1/32	1/20
optical parameter	brightness (cd/m ²)	900cd/m ²	1100cd/m ²
	horizontal viewing angle (°)	140	
	vertical viewing angle (°)	140	
electric parameter	AC Input voltage (V)	AC220V±10%	
	AC Input power frequency (Hz)	60	
	AC input max consumption (W/m ²)	490	650
	AC input average consumption (W/m ²)	170	230
environment parameter	storage temperature (°C)	-10 - 50	
	working temperature (°C)	0 - 40	
	storage humidity (RH)	10%~90%	
	Protection grade	IP40/IP31	
	working humidity (RH)	10%~90%	
	span life (hrs)	100000	
	cabinet installation way	fixed	
	cabinet maintenance way	front access / rear access	

Thanks !

